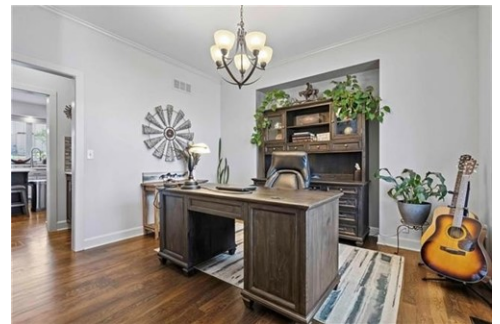




\$ 535,000



16417 W 171st St, Olathe, KS 66062

- » Beds: 4 | Baths: 3 Full, 1 Half
- » MLS #: 2481672
- » Single Family | 2,571 ft² | Lot: 11,326 ft²
- » More Info: 16417W171stSt.IsForSale.com



Huff Group
(913) 515-0722 (mobile)
zack@huffgroupkc.com
<http://www.huffgroupkc.com>

HuffGroup
your KEY to success

Keller Williams Realty Partners, Inc.
11005 Metcalf Ave
Overland Park, KS 66210
(913) 276-4833

Nestled in the serene Forest Hills community this stunning home offers the perfect blend of luxury and comfort. Long covered front porch to enjoy your favorite beverage. Beautiful combinations of light and darks throughout. Soaring Vaulted Entry. Stunning wood floors on the main. Most popular floorplan offers open-concept layout that seamlessly connects the great room with the gourmet kitchen. Speaking of kitchen the marvelous, updated Kitchen is sure to please the chef with large eat-in center island, quartz countertops, dazzling backsplash, stainless steel appliances including gas oven and pantry. ALL APPLIANCES STAY! Breakfast Area off Kitchen accesses back patio, great for outdoor cooking and entertaining! Great Room with beautiful stone fireplace perfect for those brisk nights! Front flex room currently staged as office, could be second dining area or sitting room. Mud room and half bath complete the main. Head up and find a generous primary suite boasting a double vanity, whirlpool tub, huge double headed walk-in shower and walk-in closet which accesses convenient bedroom level laundry room. Bedroom 2 has a private en-suite bath as well. Bedrooms 3 and 4 share a bathroom, each with their own vanity. Full unfinished basement is ready to be completed or use for extra storage space. 3 Car Garage with built-in shelving. Great location just minutes to Heritage Park and Major Highways.

